

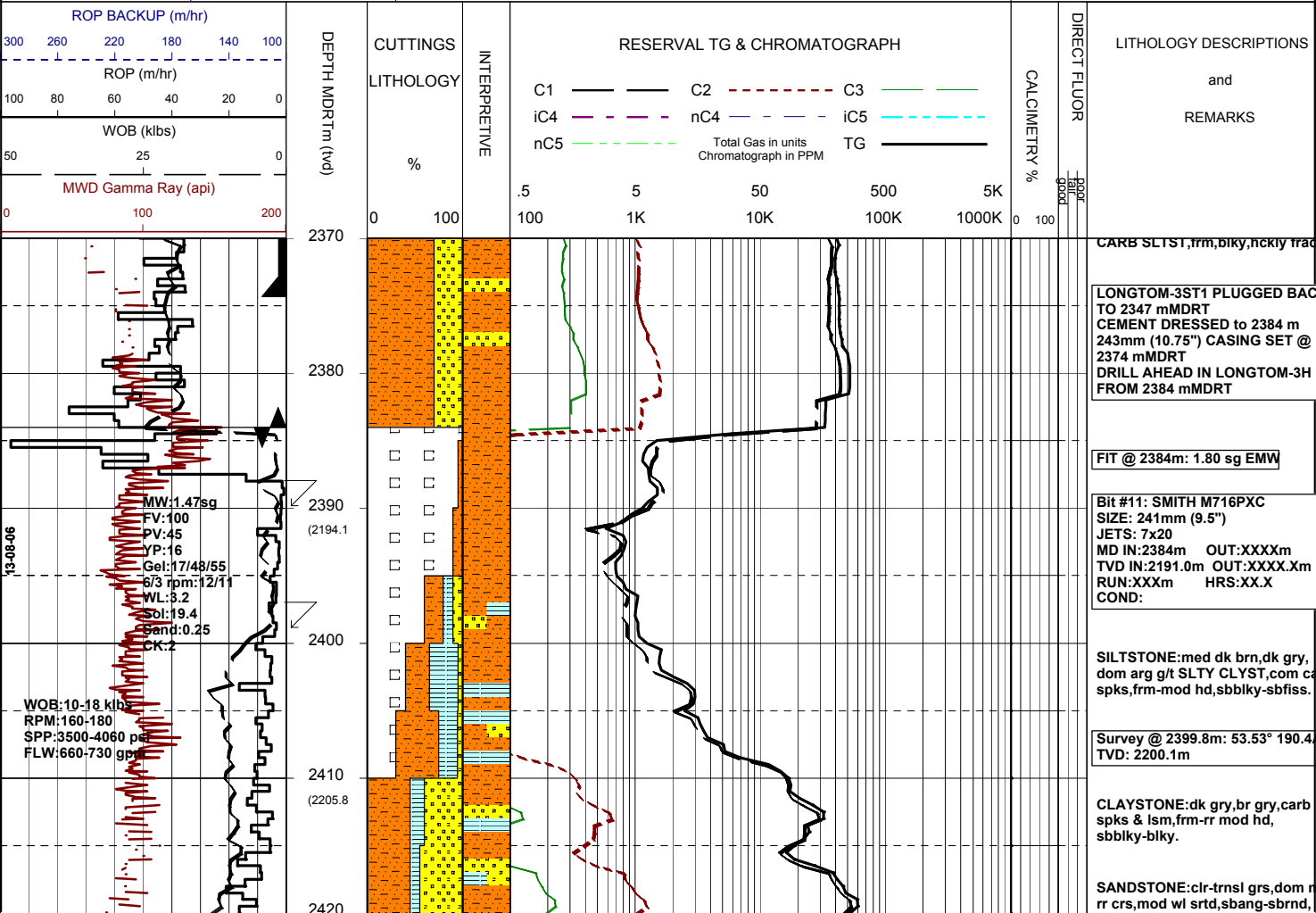


# MASTERLOG LONGTOM-3H



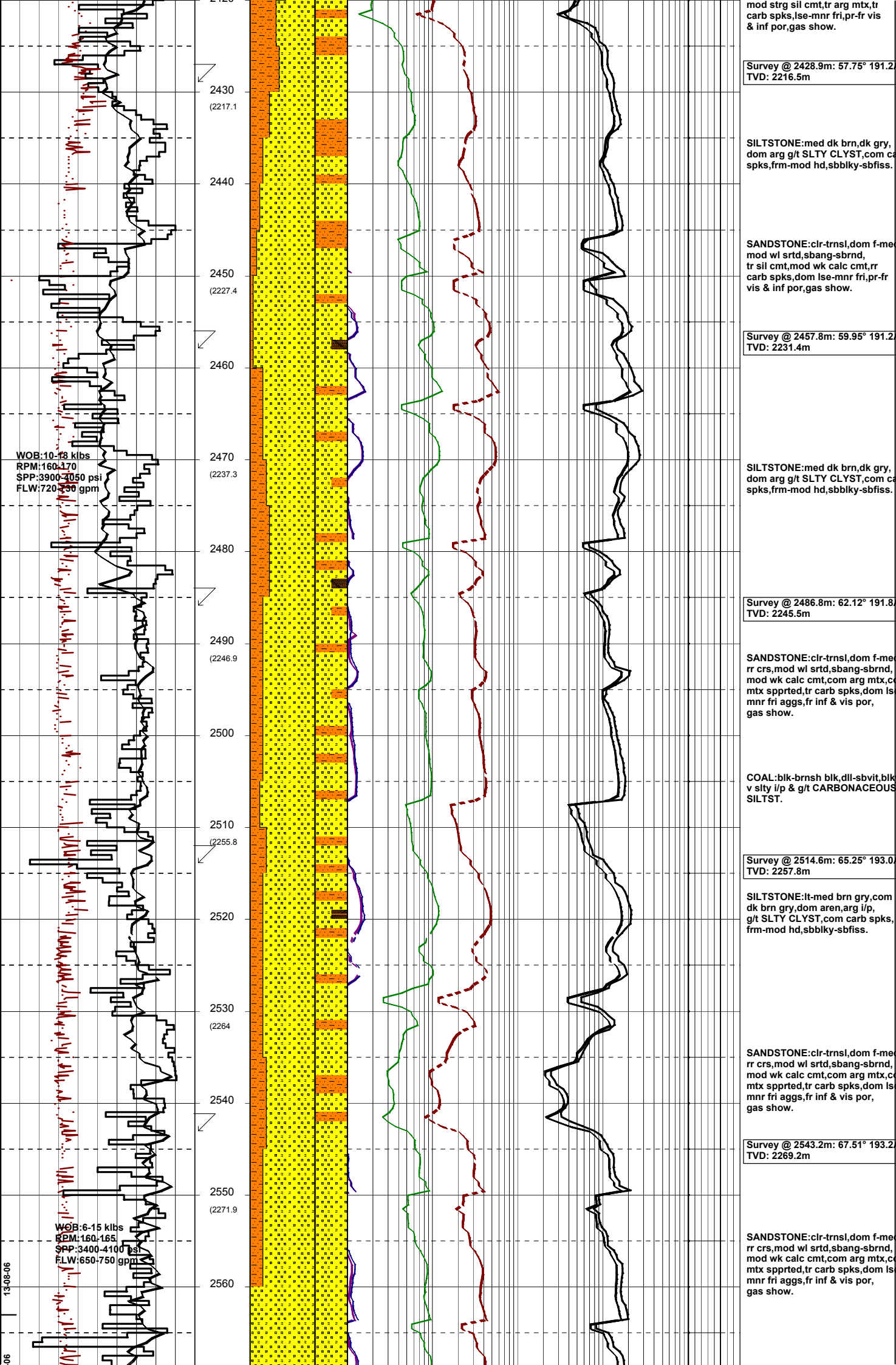
GENERAL	POSITION	HOLE / CASING INFO	DATE / DEPTH	ENGINEERS
Country : AUSTRALIA	Latitude : 38°05'34.63"S	914mm(36") hole to: 111.8m	Spud Date : 02-08-2006	T. N. KYAW
Permit : VIC/P54	Longitude : 148°18'41.52"E	559mm(22") hole to: 1005m	Total Depth Date : XX-XX-2006	A. DUNN
Field : LONGTOM	UTM Co-ord X (m E): 615006	241mm(9 1/2") hole to: m	Total Depth (mMDRT): m	D. ADDERLEY
Basin : GIPPSLAND	UTM Co-ord Y (m N): 5783059.3	762mm(30") Cond. to: 110.8m	True Vertical Depth (mTVDSS): m	P. RADY
Well Type : APPRAISAL	RT to LAT (m): 21.5	406mm(16") Csg. to: 995.32m	Log Scale : 1/ 500	
Rig: OCEAN PATRIOT	RT to Sea Bed (m): 78.2		Final Status : ??	

ABBREVIATIONS	LITHOLOGY LEGEND	ENGINEERING LEGEND
<p>MW Mud Weight</p> <p>FV Funnel Viscosity</p> <p>PV Plastic Viscosity</p> <p>YP Yield Point</p> <p>Gel Gel Strength</p> <p>WL Water Loss</p> <p>KCl Potassium Chloride</p> <p>Cl Chlorides</p> <p>Incl Inclination</p> <p>Az Azimuth</p> <p>WOB Weight on Bit (klbs)</p> <p>RPM Rotations Per Min</p> <p>FLW Flow Rate (gpm)</p> <p>SPP Pump Pressure (psi)</p> <p>RR Re-Run Bit</p> <p>TG Trip Gas</p> <p>CG Connection Gas</p> <p>BG Background Gas</p> <p>DGP Drilled Gas Peak</p> <p>MM Mud Motor</p>	<p><b>Claystone</b></p> <p><b>Siltstone</b></p> <p><b>Shale</b></p> <p><b>Fine SST</b></p> <p><b>Medium SST</b></p> <p><b>Coarse SST</b></p> <p><b>Mari</b></p> <p><b>Clay, Limestone</b></p> <p><b>Limestone</b></p> <p><b>Dolomite</b></p> <p><b>Coal</b></p> <p><b>Volcanic</b></p> <p><b>Lithic Fragment</b></p> <p><b>Foraminifera</b></p> <p><b>Fossils</b></p> <p><b>Bryozoa</b></p> <p><b>Sponges</b></p> <p><b>Brachiopoda</b></p> <p><b>Cement</b></p> <p><b>Glauconite</b></p> <p><b>Pyrite</b></p> <p><b>Iron Minerals</b></p> <p><b>Mica</b></p> <p><b>Siderite</b></p>	<p><b>Shoe</b></p> <p><b>Deviation survey</b></p> <p><b>DST</b></p> <p><b>TEST</b> Test</p> <p><b>Sidewall Core</b></p> <p><b>Core</b></p> <p><b>DOLOMITE</b></p> <p><b>RFT</b></p> <p><b>FIT</b></p> <p><b>Mud loss</b></p> <p><b>Mud gain</b></p>



MW: 1.47 sg  
 FV: 100  
 PV: 45  
 YP: 16  
 Gel: 17/48/55  
 6/3 rpm: 12/11  
 WL: 3.2  
 Sol: 19.4  
 Sand: 0.25  
 CK: 2

WOB: 10-18 klbs  
 RPM: 160-180  
 SPP: 3500-4060 psi  
 FLW: 660-730 gpm



mod strg sil cmt, tr arg mtx, tr carb spks, lse-mnr fri, pr-fr vis & inf por, gas show.

Survey @ 2428.9m: 57.75° 191.2m TVD: 2216.5m

SILTSTONE: med dk brn, dk gry, dom arg g/t SLTY CLYST, com carb spks, frm-mod hd, sbbiky-sbfiss.

SANDSTONE: clr-trnsl, dom f-me mod wl srtd, sbang-sbrnd, tr sil cmt, mod wk calc cmt, rr carb spks, dom lse-mnr fri, pr-fr vis & inf por, gas show.

Survey @ 2457.8m: 59.95° 191.2m TVD: 2231.4m

SILTSTONE: med dk brn, dk gry, dom arg g/t SLTY CLYST, com carb spks, frm-mod hd, sbbiky-sbfiss.

Survey @ 2486.8m: 62.12° 191.8m TVD: 2245.5m

SANDSTONE: clr-trnsl, dom f-me rr crs, mod wl srtd, sbang-sbrnd, mod wk calc cmt, com arg mtx, cmtx sppted, tr carb spks, dom lse-mnr fri aggs, fr inf & vis por, gas show.

COAL: blk-brnsh blk, dll-sbvlt, blk v stly i/p & g/t CARBONACEOUS SILTST.

Survey @ 2514.6m: 65.25° 193.0m TVD: 2257.8m

SILTSTONE: lt-med brn gry, com dk brn gry, dom aren, arg i/p, g/t SLTY CLYST, com carb spks, frm-mod hd, sbbiky-sbfiss.

SANDSTONE: clr-trnsl, dom f-me rr crs, mod wl srtd, sbang-sbrnd, mod wk calc cmt, com arg mtx, cmtx sppted, tr carb spks, dom lse-mnr fri aggs, fr inf & vis por, gas show.

Survey @ 2543.2m: 67.51° 193.2m TVD: 2269.2m

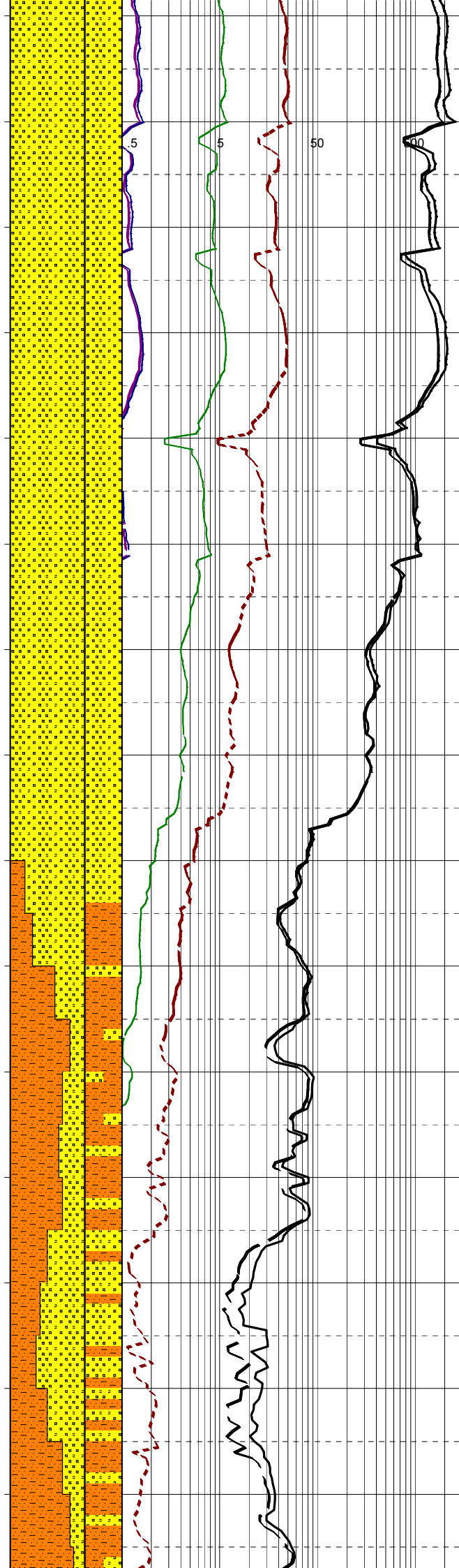
SANDSTONE: clr-trnsl, dom f-me rr crs, mod wl srtd, sbang-sbrnd, mod wk calc cmt, com arg mtx, cmtx sppted, tr carb spks, dom lse-mnr fri aggs, fr inf & vis por, gas show.

WOB: 10-18 klbs  
RPM: 160-170  
SPP: 3900-4050 psi  
FLW: 720-750 gpm

WOB: 6-15 klbs  
RPM: 160-165  
SPP: 3400-4100 psi  
FLW: 650-750 gpm

2570 (2279.5)  
 2580  
 2590 (2287.2)  
 2600  
 2610 (2295)  
 2620  
 2630 (2302.8)  
 2640  
 2650 (2311.2)  
 2660  
 2670 (2319.9)  
 2680  
 2690 (2328.9)  
 2700  
 2710 (2337.8)

WOB:12-20 klbs  
 RPM:160-165  
 SPP:3950-4100 psi  
 FLW:700-750 gpm



Survey @ 2571.2m: 67.63° 192.3  
 TVD: 2279.9m

SANDSTONE:clr-trnsl,f-med,dor  
 med grs,mod wl srt,shang-sbrn  
 mod wk calc cmt,slty mtx,com  
 mtx sppted,tr carb spks,dom  
 uncons fri aggs,fr inf & vis por,  
 gas show.

Survey @ 2599.7m: 67.14° 191.3  
 TVD: 2290.9m

SANDSTONE:pl gry-lt gry,clr-trn  
 tr lt grn,trpl brn,vf-med,dom f grs  
 mod wl srt,sbang-sbrnd,mod wk  
 calc cmt,lt gry-lt brn slty mtx,tr  
 liths,tr carb spks,uncons-fri aggs  
 pr inf por,gas show.

Survey @ 2629.3m: 66.53° 189.3  
 TVD: 2302.5m

SANDSTONE:pl gry-lt gry,clr-trn  
 vf-med,dom f grs,mod wl srt,sba  
 sbrnd,strg calc cmt,brnsh gry sl  
 mtx,tr liths,tr carb spks,uncons-  
 fri aggs,pr inf por,gas show.

Survey @ 2657.6m: 64.09° 186.8  
 TVD: 2314.3m

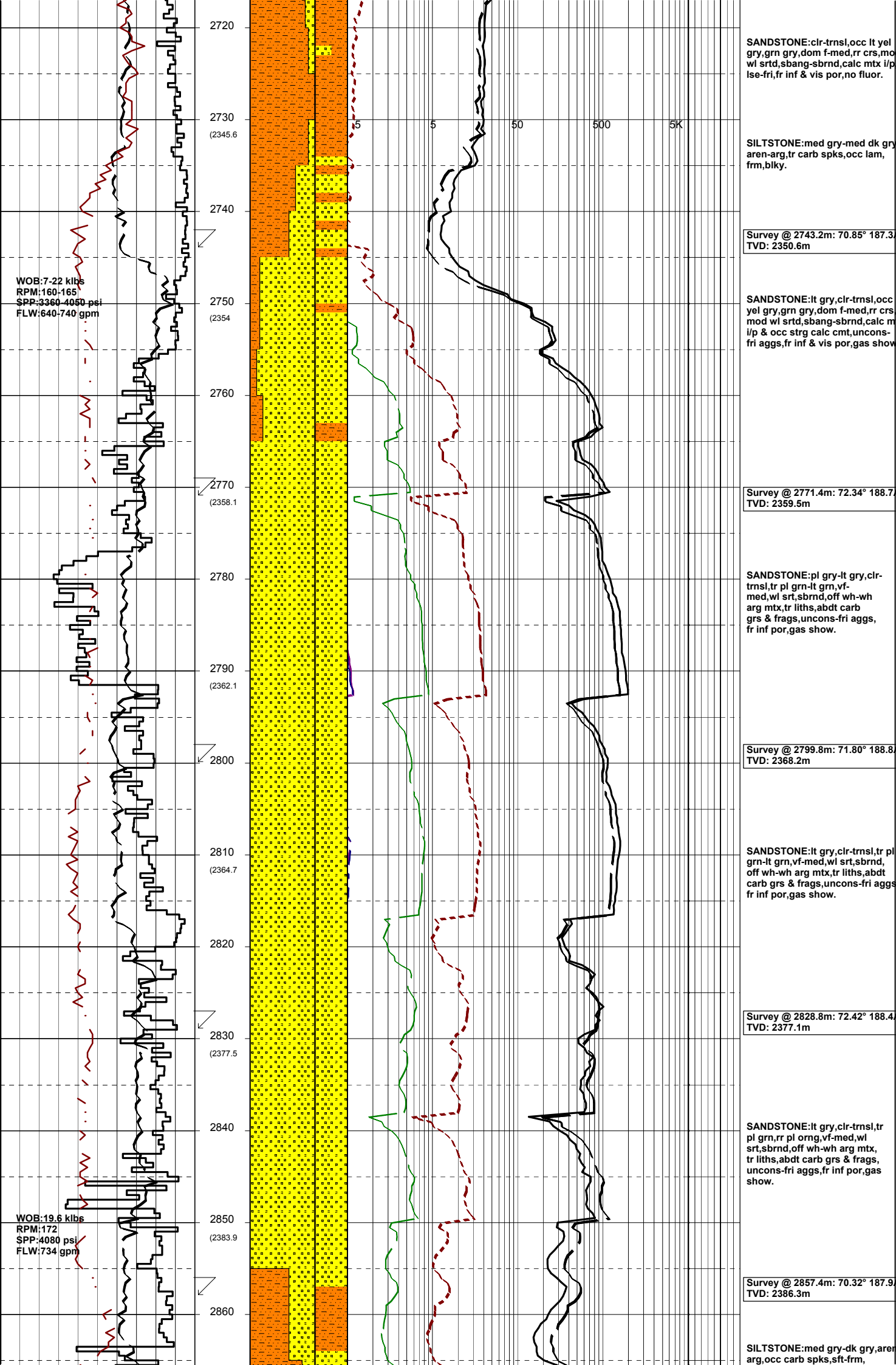
SILTSTONE:lt-med gry,aren-arg,  
 com carb spks & carb lams,occ  
 f lams,sft-rr frm,sbbiky.

Survey @ 2686.1m: 62.47° 183.8  
 TVD: 2327.2m

SANDSTONE:clr-trnsl,occ lt yel  
 gry,grn gry,f-med,rr crs grs,mod  
 wl srt,shang-sbrnd,calc mtx l/p  
 lse-fri,fr inf & vis por,no fluor.

SILTSTONE:med gry-med dk gry  
 aren-arg,carb spks,occ lam,  
 frm,blky.

Survey @ 2714.8m: 64.94° 185.5  
 TVD: 2339.9m



WOB: 7-22 klbs  
 RPM: 160-165  
 SPP: 3360-4050 psi  
 FLW: 640-740 gpm

WOB: 19.6 klbs  
 RPM: 172  
 SPP: 4080 psi  
 FLW: 734 gpm

SANDSTONE:clr-trnsl,occ lt yel gry,grn gry,dom f-med,rr crs,mod wl srt,shang-sbrnd,calc mtx i/p,lse-fri,fr inf & vis por,no fluor.

SILTSTONE:med gry-med dk gry,aren-arg,tr carb spks,occ lam,frm,blk.

Survey @ 2743.2m: 70.85° 187.3°  
 TVD: 2350.6m

SANDSTONE:lt gry,clr-trnsl,occ yel gry,grn gry,dom f-med,rr crs,mod wl srt,shang-sbrnd,calc m i/p & occ strg calc cmt,uncons-fri aggs,fr inf & vis por,gas show

Survey @ 2771.4m: 72.34° 188.7°  
 TVD: 2359.5m

SANDSTONE:pl gry-lt gry,clr-trnsl,tr pl grn-lt grn,vf-med,wl srt,sbrnd,off wh-wh arg mtx,tr liths,abdt carb grs & frags,uncons-fri aggs,fr inf por,gas show.

Survey @ 2799.8m: 71.80° 188.8°  
 TVD: 2368.2m

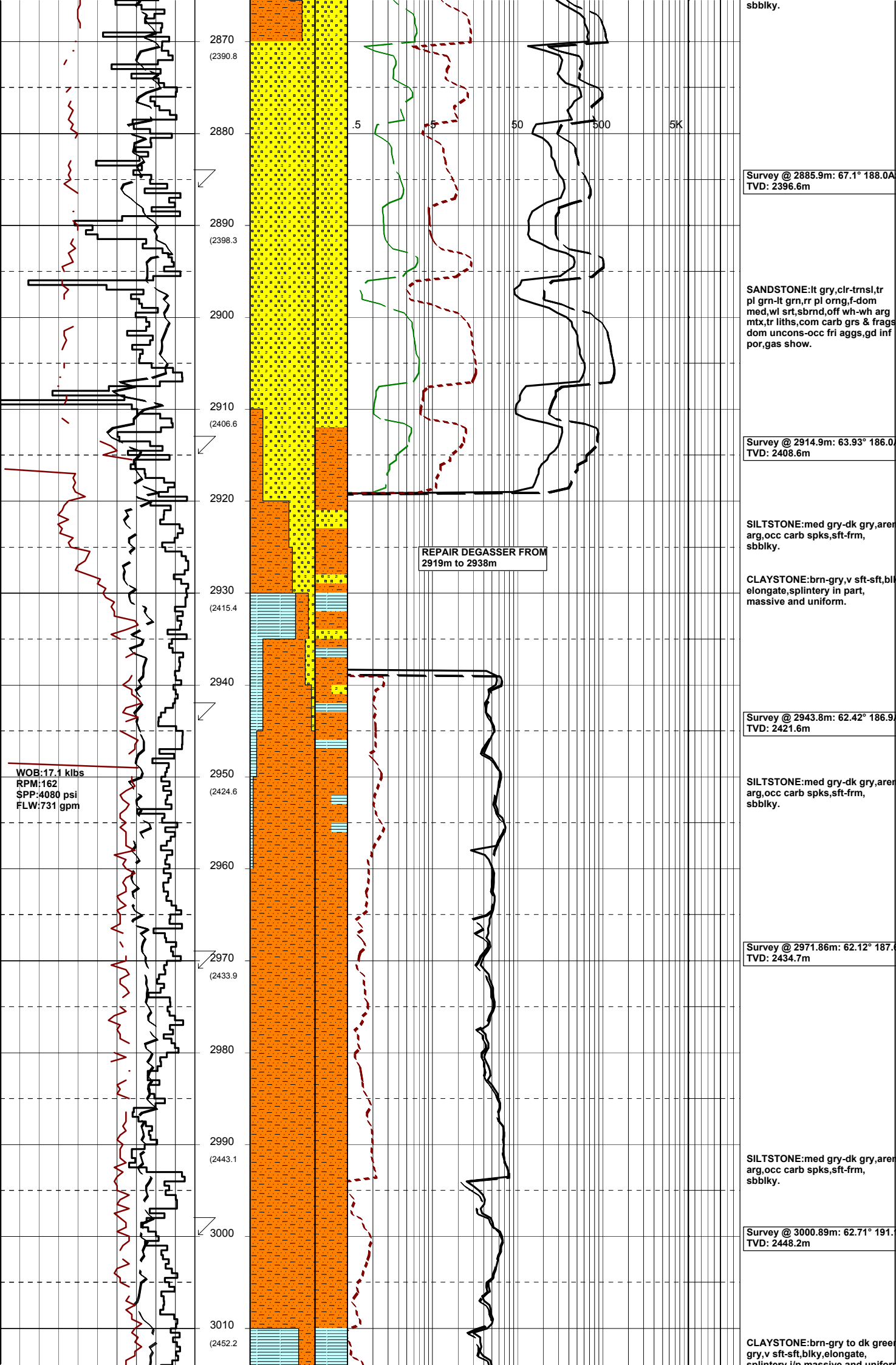
SANDSTONE:lt gry,clr-trnsl,tr pl grn-lt grn,vf-med,wl srt,sbrnd,off wh-wh arg mtx,tr liths,abdt carb grs & frags,uncons-fri aggs,fr inf por,gas show.

Survey @ 2828.8m: 72.42° 188.4°  
 TVD: 2377.1m

SANDSTONE:lt gry,clr-trnsl,tr pl grn,rr pl org,vf-med,wl srt,sbrnd,off wh-wh arg mtx, tr liths,abdt carb grs & frags, uncons-fri aggs,fr inf por,gas show.

Survey @ 2857.4m: 70.32° 187.9°  
 TVD: 2386.3m

SILTSTONE:med gry-dk gry,aren arg,occ carb spks,sft-frm,



sbbiky.

SANDSTONE: lt gry, clr-trnsl, tr pl grn-lt grn, rr pl org, f-dom med, wl srt, sbrnd, off wh-wh arg mtz, tr liths, com carb grs & frags dom uncons-occ fri aggs, gd inf por, gas show.

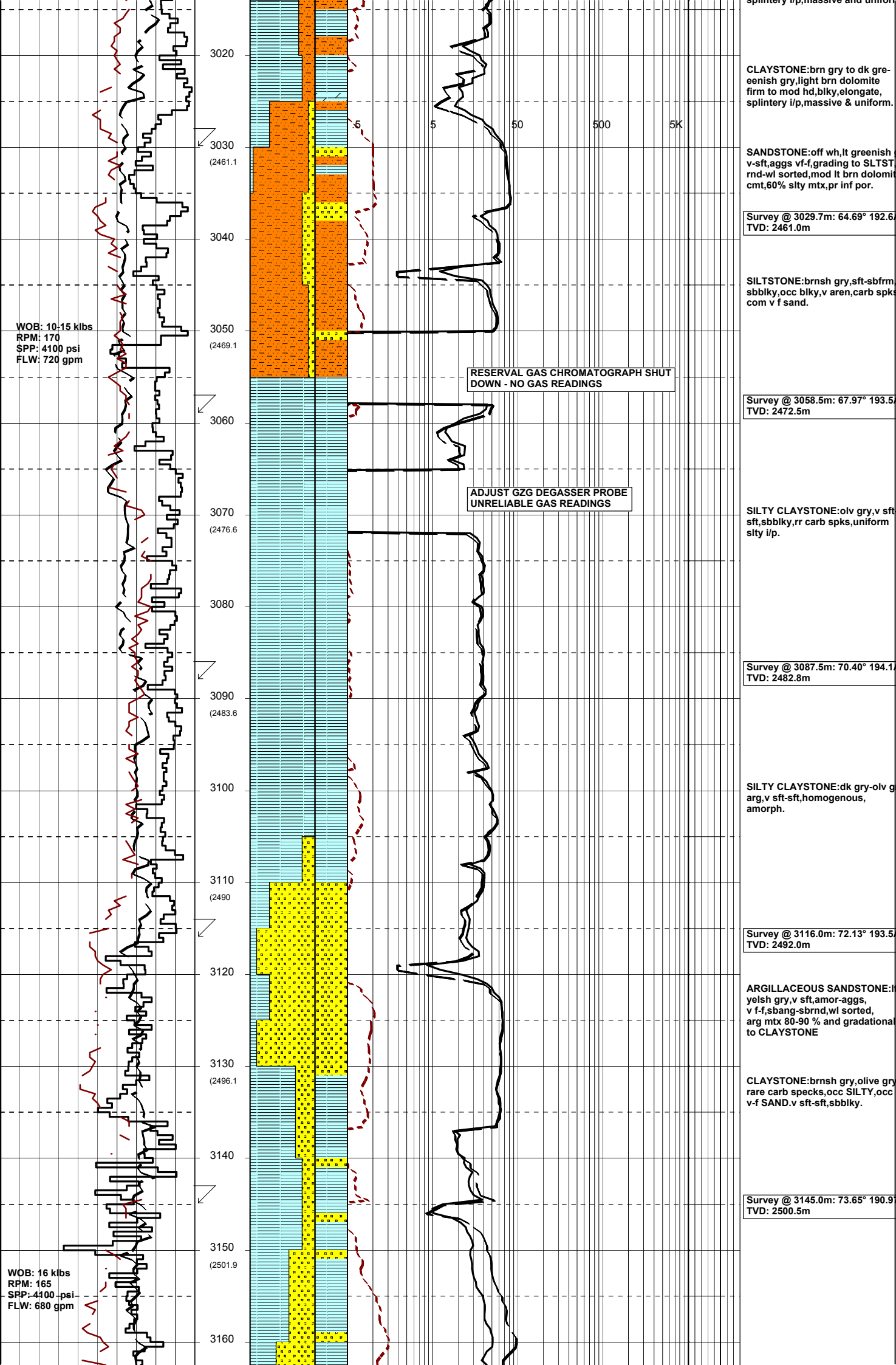
SILTSTONE: med gry-dk gry, aren arg, occ carb spks, sft-frm, sbbiky.

CLAYSTONE: brn-gry, v sft-sft, blk elongate, splintery in part, massive and uniform.

SILTSTONE: med gry-dk gry, aren arg, occ carb spks, sft-frm, sbbiky.

SILTSTONE: med gry-dk gry, aren arg, occ carb spks, sft-frm, sbbiky.

CLAYSTONE: brn-gry to dk green gry, v sft-sft, blk, elongate, splintery in massive and uniform.



CLAYSTONE:brn gry to dk greenish gry,light brn dolomite firm to mod hd,blk,elongate, splintery i/p, massive & uniform.

SANDSTONE:off wh,lt greenish v-sft,aggs vf-f,grading to SLTST md-wl sorted,mod lt brn dolom cmt,60% sity mtx,pr inf por.

Survey @ 3029.7m: 64.69° 192.6°  
TVD: 2461.0m

SILTSTONE:brnsh gry,sft-sbfrm sbbkly,occ blk,v aren,carb spks com v f sand.

Survey @ 3058.5m: 67.97° 193.5°  
TVD: 2472.5m

SILTY CLAYSTONE:olv gry,v sft sft,sbbkly,rr carb spks,uniform sity i/p.

Survey @ 3087.5m: 70.40° 194.1°  
TVD: 2482.8m

SILTY CLAYSTONE:dk gry-olv g arg,v sft-sft,homogenous, amorph.

Survey @ 3116.0m: 72.13° 193.5°  
TVD: 2492.0m

ARGILLACEOUS SANDSTONE:ylsh gry,v sft,amor-aggs, v f-f,sbang-sbrnd,wl sorted, arg mtx 80-90 % and gradational to CLAYSTONE

CLAYSTONE:brnsh gry,olive gry rare carb specks,occ SILTY,occ v-f SAND.v sft-sft,sbbkly.

Survey @ 3145.0m: 73.65° 190.9°  
TVD: 2500.5m

WOB: 10-15 klbs  
RPM: 170  
SPP: 4100 psi  
FLW: 720 gpm

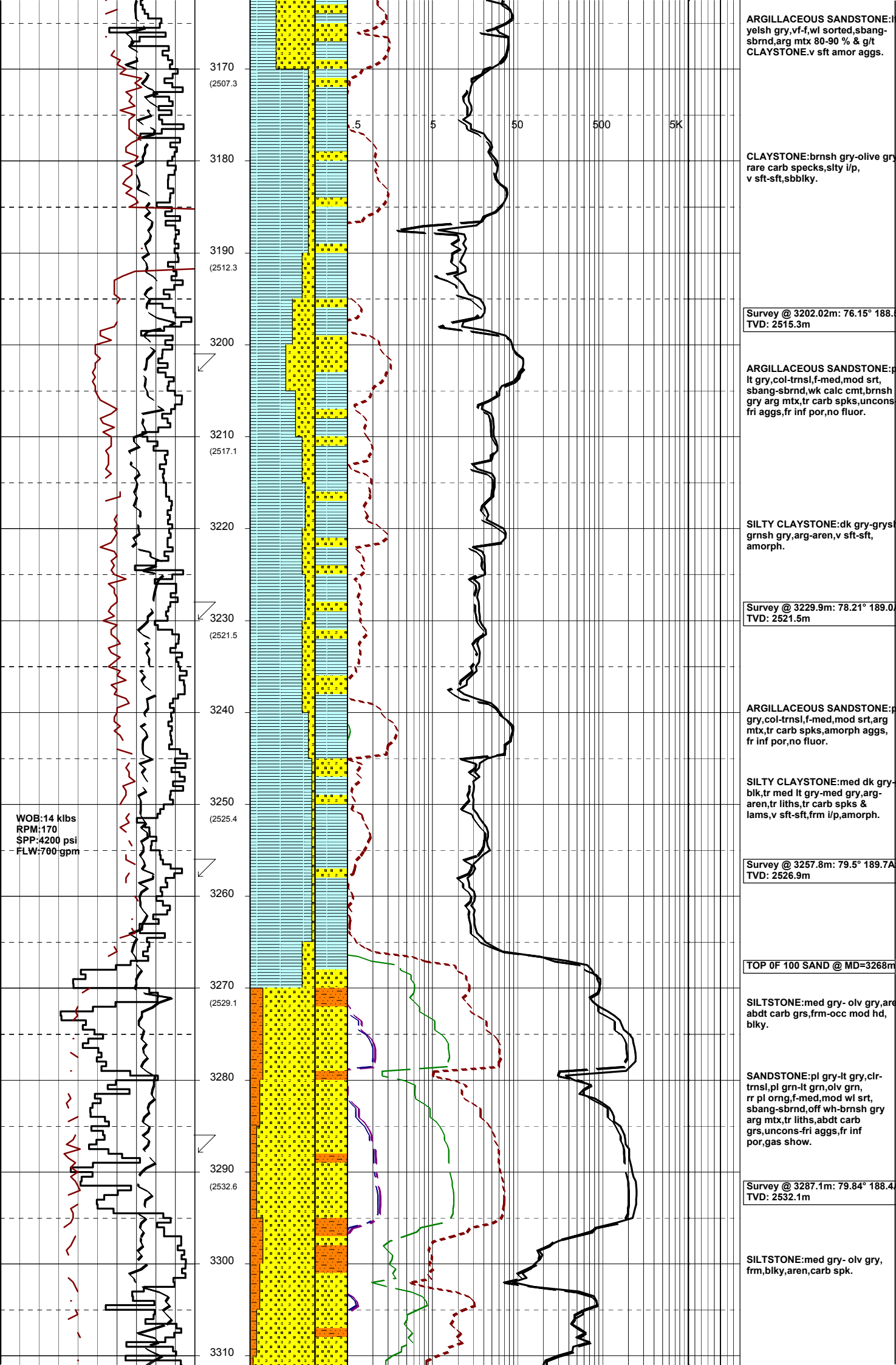
RESERVAL GAS CHROMATOGRAPH SHUT DOWN - NO GAS READINGS

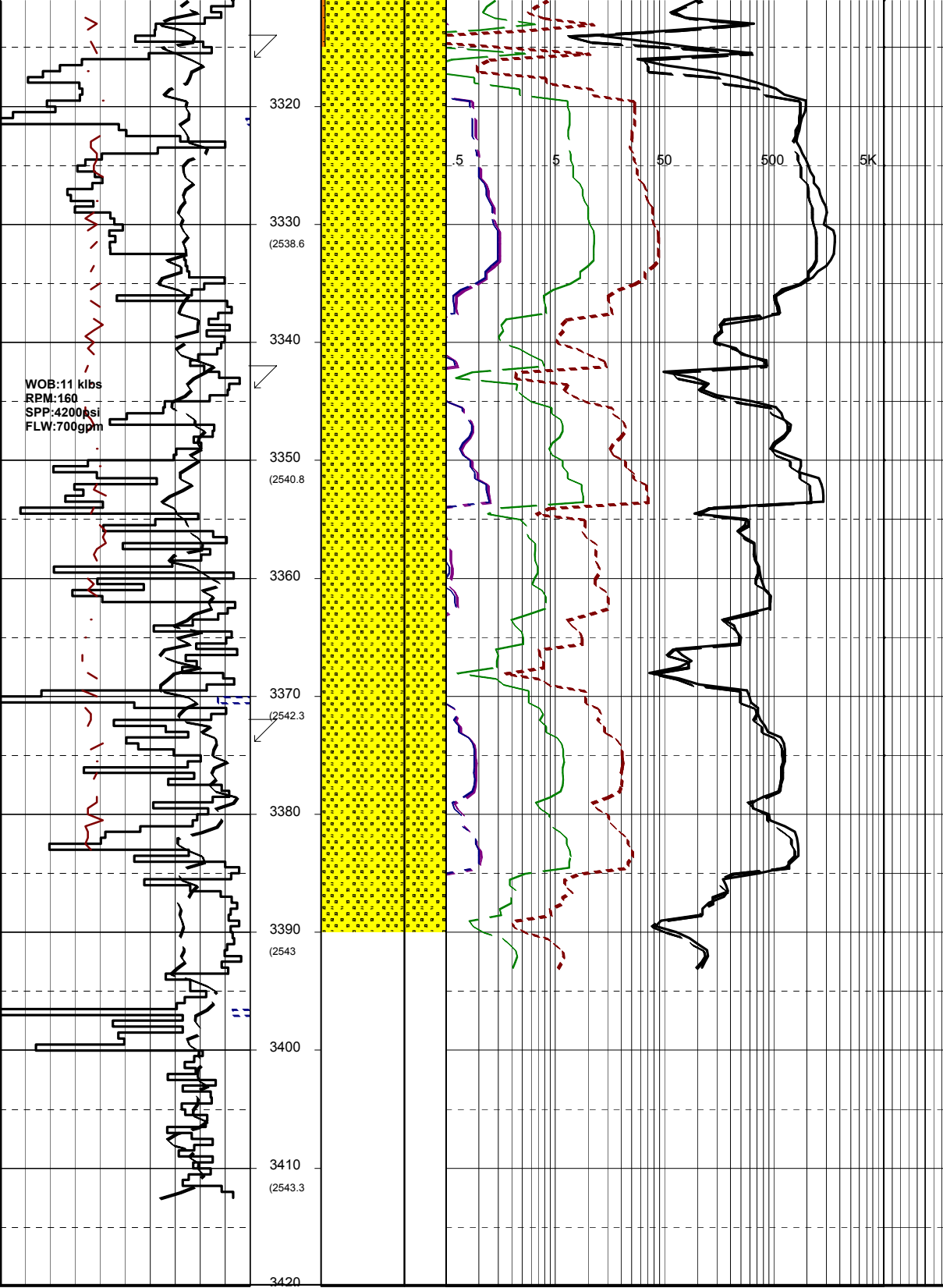
ADJUST GZG DEGASSER PROBE UNRELIABLE GAS READINGS

WOB: 16 klbs  
RPM: 165  
SPP: 4100 psi  
FLW: 680 gpm

3020  
3030 (2461.1)  
3040  
3050 (2469.1)  
3060  
3070 (2476.6)  
3080  
3090 (2483.6)  
3100  
3110 (2490)  
3120  
3130 (2496.1)  
3140  
3150 (2501.9)  
3160

5 50 500 5K





Survey @ 3316.29m: 81.38° 188.8  
 TVD: 2536.9m

SANDSTONE: off wh. lt yell-gry, grs clr trns, grn, occ-ornng-brn, blk carb, f-med, wl sorted, sbang-rnd, 60% lse & 40% fri aggs, calc i/p, calc grs, wk calc cmt, mtx-10-40 %, com carb grs, occ carb

Survey @ 3344.87m: 84.32° 189.1  
 TVD: 2540.4m